

Pro-Shore® , LLC
www.pro-shore.com

Email:
ron@pro-shore.net

Direct Sales:
ron@pro-shore.net
rob@pro-shore.net

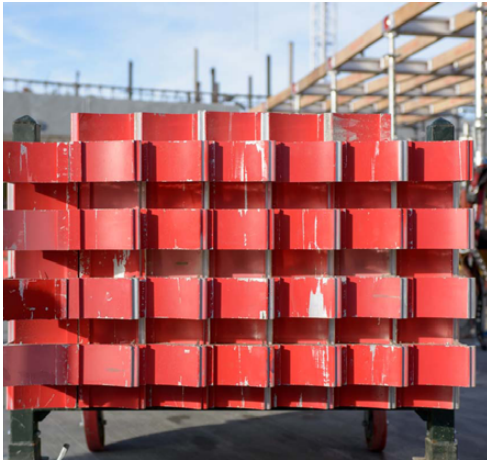
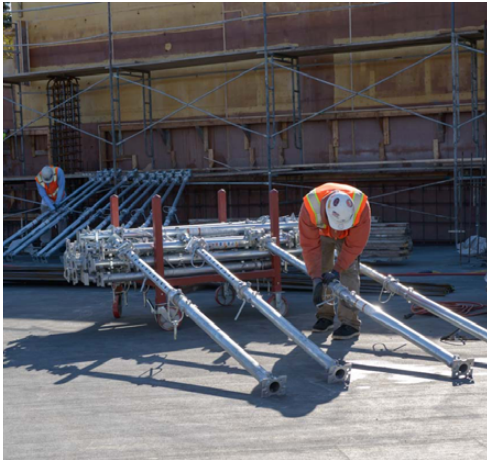
Pro-Shore's® versatile and efficient product lines are designed around contractors' needs. The Pro-Shore® decking system is the most cost effective solution in today's marketplace.

During the development of our system, Pro-Shore® combined forces with several leading contractors to gauge their forming needs, while summarily improving labor productivity. Information gathered during this process was vital in designing a simple system that can handle all phases of the contractors forming needs, in a cost effective manner.

Over 1,000 buildings have been completed with out system in over 8 different countries.

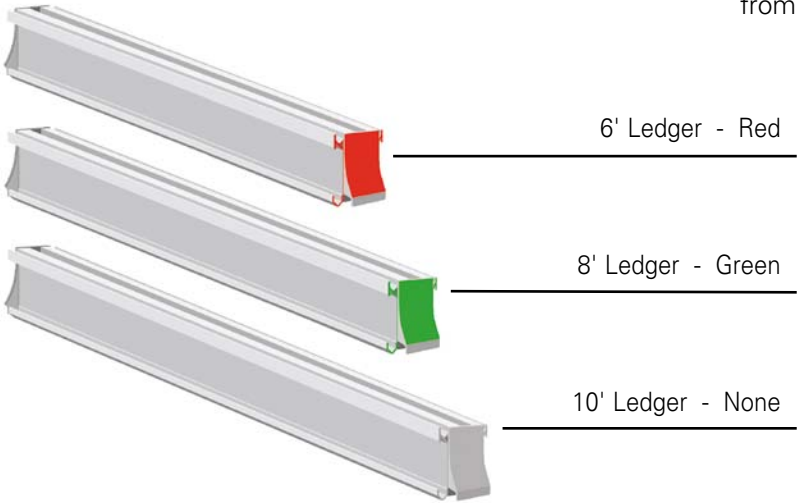
Pro-Shore® ships out all equipment in convenient storage racks and/or wire baskets, which can be moved throughout the jobsite without the use of a crane, or by way of our Load Rated easy to insert/remove Casters with Quick Release Snap Pins. These Standard Load Rated Carts, Baskets and Caster combination allow for Pro-Shore Material to be moved conveniently and SAFELY around the jobsite by one man.

DESCRIPTION	QUANTITY PER RACK	WEIGHT	WEIGHT PER RACK
Primary Post	50	73 lbs.	3733 lbs.
Primary Post w/ Extension	50	88 lbs.	4483 lbs.
#3 Post	50	58 lbs.	2983 lbs.
#4 Post	35	83 lbs.	3083 lbs.
#5 Post	40	88 lbs.	3174 lbs.
#5 Post W/ 5'10 Ext.	35	99 lbs.	3559 lbs.
Concrete Forming Panels	5	355 lbs.	1885 lbs.
Pro-Deck® Panel 6x3	11	63 lbs.	778 lbs.
Pro-Deck® Panel 6x2	13	47 lbs.	696 lbs.
Slab Grabber	50	42 lbs.	2183 lbs.
10' Ledgers	33	67 lbs.	2311 lbs.
8' Ledgers	33	54 lbs.	1865 lbs.
6' Ledgers	33	40 lbs.	1320 lbs.
4' LVL Joist	68	15.2 lbs.	1069 lbs.
5' LVL Joist	68	19.2 lbs.	1137 lbs.
6' LVL Joist	68	24.2 lbs.	1341 lbs.
6' Aluminum Joist	50	18 lbs.	983 lbs.



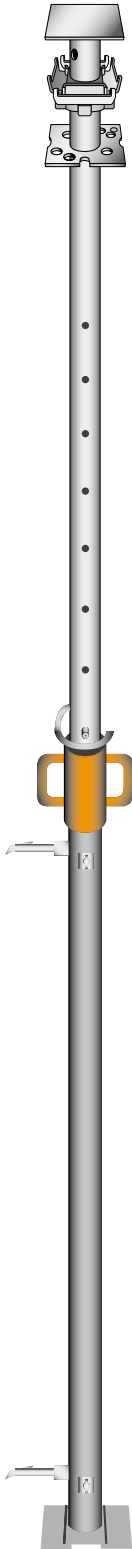
Pro-Shore® OVERVIEW

LEDGER COLOR CODES

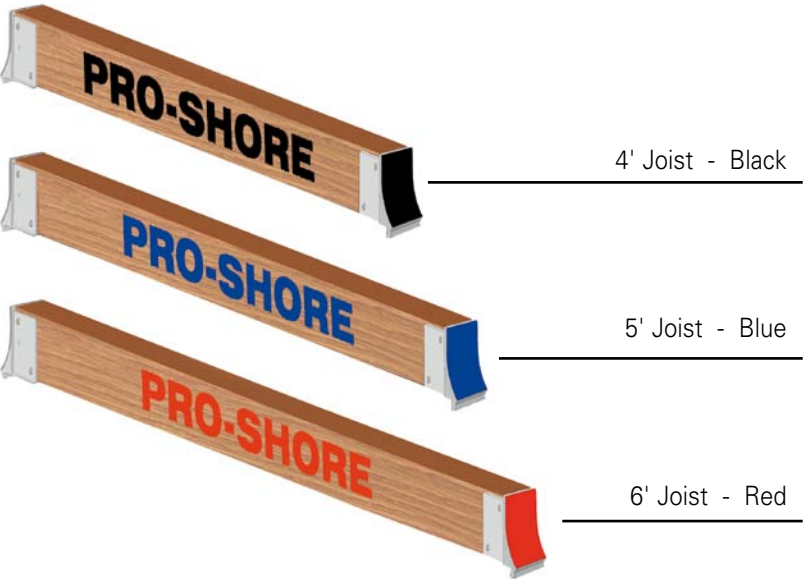


PRO-SHORE POSTS

Posts available in heights ranging from 6'-6" to 18'-2", with load capacities from 4,290 lbs. to 13,600 lbs.



JOIST COLOR CODES



Pro-Shore® IN ACTION

1



Staged components distributed from rolling carts in advance of erection.

2



Ledgers are hung from the drophead on one end, then attached to the second post and raised into position by a single worker.

3



Joists are hung by one end from a ledger and then rotated into position at the opposite end by a single worker.

4



System is laser-graded using screw collars on the posts for fine adjustments, intermediate joists are added, and plywood panels are tacked in place with four 8-penny nails each.

5



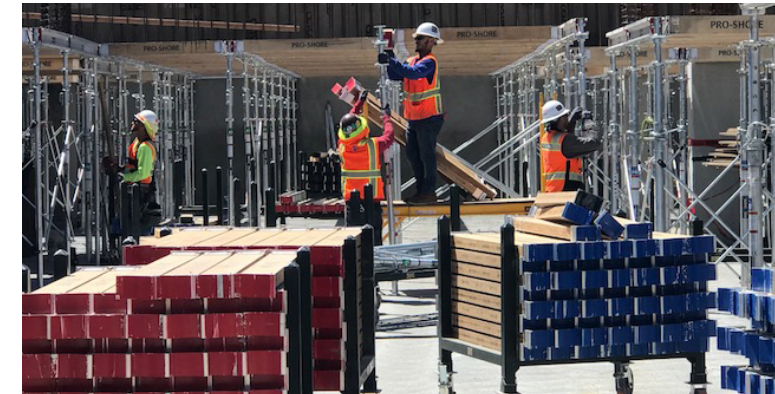
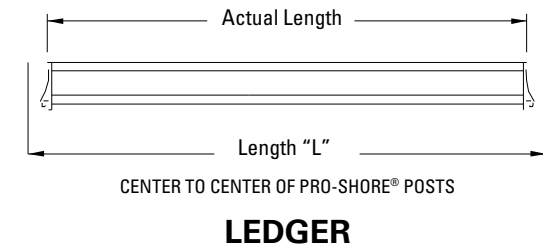
Dropheads shown released. Joists, ledgers, and plywood are freed so that 75% of the system can cycle to the next pour.

6



Posts reset in place serving as reshores after joists, ledgers, and plywood are stripped.

- 6'-6" to 18'-2" single post capability.
- Drophead system allow ledgers and lvl joists to be stripped while leaving reshores in place.
- 70% material recovery one day after pouring. It's possible only vertical posts stay in place as reshores.
- Ramps and decks with slopes up to 15% can be shored and safely braced to resist lateral loads.
- 6'-0" to 8'-0" post grid (48 SF) requires 25% fewer posts than European 2mx2m (approx. 36 SF) post grids.
- Up to 24" slabs can be supported with standard equipment.
- Fully braced cantilevers allow 4'-0" walkways beyond slab edge.
- All parts are color coded to match erection drawings.



- 5,000 to 6,000 SF of equipment can be loaded on a 40' flatbed (results in lower freight costs).
- All posts have jet-locks so steel cross braces can be utilized to stabilize the posts into 4-legged towers for safety during erection of our system.
- No tripods or wood bracing required.
- "Field friendly" detailed delivery list with line item inventory.
- Pro-Shore® is available directly through us, or through one of our many distributors

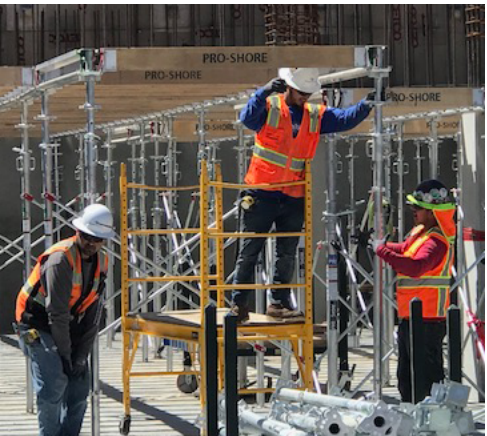




A



H



I



J



B



C



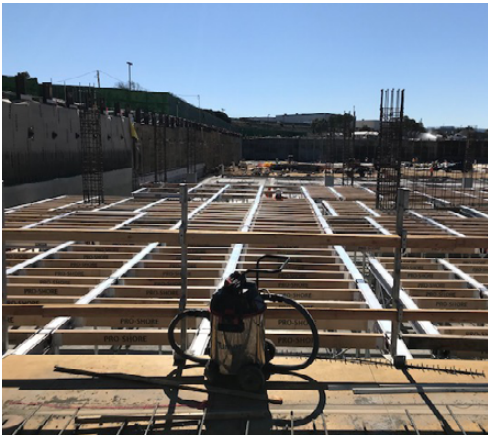
D



K



L



E



G



M



F



N



Pro-Shore®, LLC
www.pro-shore.com

Email:
ron@pro-shore.net

Direct Sales:
ron@pro-shore.net
rob@pro-shore.net

Distributors:



AFS – ADVANCED FORMWORK SOLUTIONS
 Washington, Oregon and Idaho
advancedformingsolutions.com



CSI SHORING, INC.
 Southern California and Las Vegas
csishoring.com



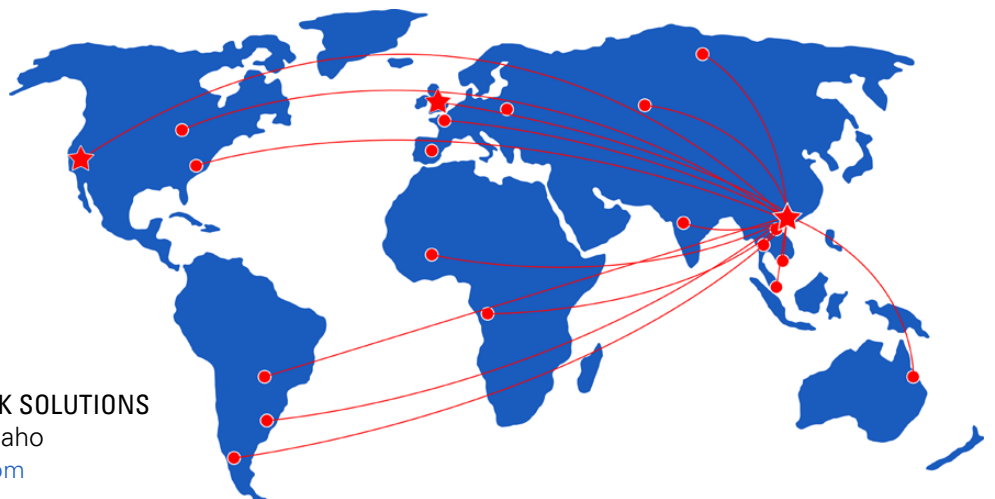
FOR-SHOR
 Utah
forshor.com



ATLAS SALES
 Hawaii & Guam
atlas-sales.com



ALUMA SYSTEMS
 Global
aluma.com/us/



Corporate Office / Warehouse:

1636 Pacific Street
 Union City, CA 94587
 +1.209.636.2770

Shipping / Receiving:

Monday-Friday
 7am to 4pm
 Contact Rob Barry at rob@pro-shore.net